

# HOUSE



17-20 JUNE 2015  
OLYMPIA LONDON

HOUSE  
& GARDEN



## THE HOUSE DESIGNED BY APRIL RUSSELL

me to our Georgian house.

As I was honoured to be asked to design two room sets within the 'HOUSE' exhibition. We were delighted to include antiques from the Olympia International and Antiques Fair from the adjoining

exhibition hall, floor and wall finishes and furniture from the exhibiting companies at House.

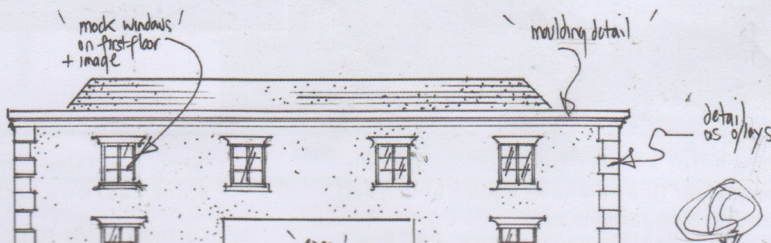
At April Russell, The Art of Interiors we use the same building blocks. We like to mix styles and periods to create harmonious and practical interiors whilst focusing on

the art, be it fine art, sculpture, ceramics and or textiles. Within the Georgian house we have created a drawing room and a dining room with extended terraces at each end.

To dress the walls, we have used wallpapers from Cole and Son and paints by Farrow & Ball. I hope you will agree that we have chosen interesting back drops for the art work.

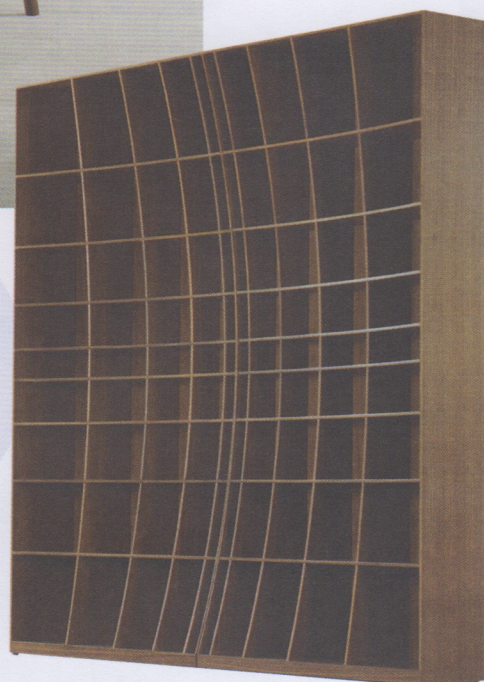
We have used a combination of different furniture suppliers and accessories from exhibitors throughout the event to create two contrasting styles. We hope you will feel at home on your visit."

Foreword by April Russell



Fun gallery  
adding to  
stimulating dining  
conversation”

IL RUSSELL



## BRINGING ART TO LIFE

A deep-rooted passion for art underpins our work and we believe lighting is crucial in bringing art to life; it has the ability to transform the artwork and its surroundings.

With a new generation of LED technology, it is now possible to create museum-grade lighting in the home so that a superior viewing experience continues beyond the gallery...

Until recently, the picture light had an old-fashioned reputation as expensive, clumsy and ineffective, detracting from the beauty of the artwork it is intended to enhance, as well as being damaging to the art.

In the past, picture lights used halogen and other incandescent light sources emitting infrared, ultraviolet and a great deal of heat. The principal benefit of using LEDs is that the harmful rays are minimised - important when lighting delicate items such as watercolour paintings or textiles and fabrics over a sustained period of time.

LED picture lights have the added benefit of dramatically reducing energy consumption and maintenance costs. We advise only a careful selection of LED equipment should be used to light art - it is essential that the product has a full spectrum of colour (95+CRI and above) to ensure all of the colours in the artwork are vivid.

By Harry Triggs and Andrew Molyneux,  
FOUNDING DIRECTORS, TML LIGHTING,  
[WWW.TMLIGHTING.COM](http://WWW.TMLIGHTING.COM)





6



## FRAMING FOR THE HOME

A bespoke frame is akin to a tailored suit.

The artwork is carefully considered along with its intended location whether it be a lounge, bedroom or ballroom. Our designers develop individual solutions which are handmade by our exceptional team of craftspeople. Welded brass, aluminum, gold and white gold leaf, acrylic and natural timbers are popular choices.

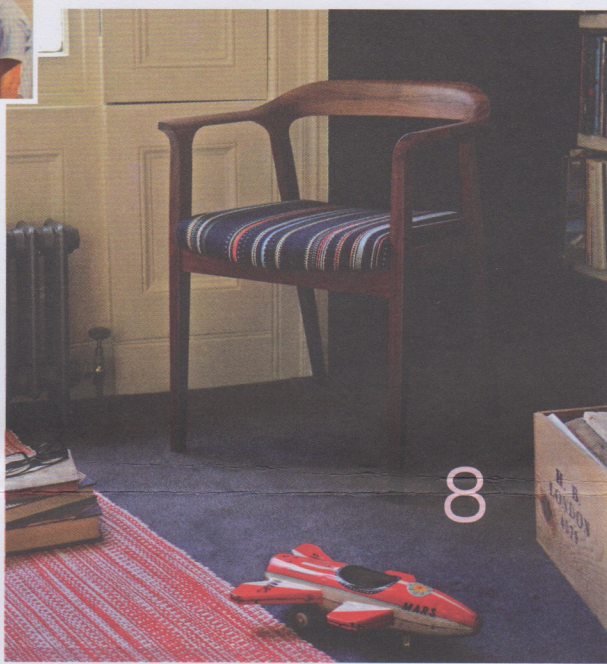
Picture framing is both an art and science; the design of a frame is an aesthetic consideration, playing with colour, material, format, shape and proportions, whilst the protection of the artwork takes into account the longevity of the work, addressing how to support the artwork's molecular structure and address potential chemical deterioration.

Over 70% of the restoration work we carry out in our conservation studio is repair work to art that has been poorly framed. Cheap glues and sticky tape have a lot to answer for.

By Kate Jones  
JOHN JONES  
[WWW.JOHNJONES.CO.UK](http://WWW.JOHNJONES.CO.UK)

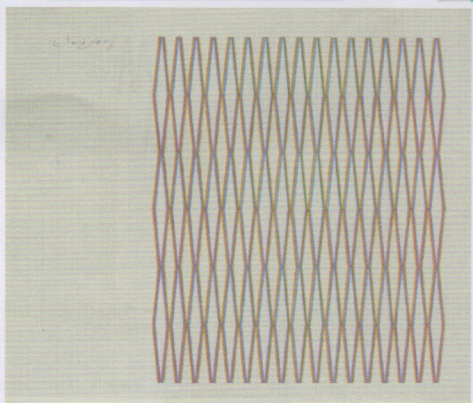


7



8

9



10

