

Where to Buy



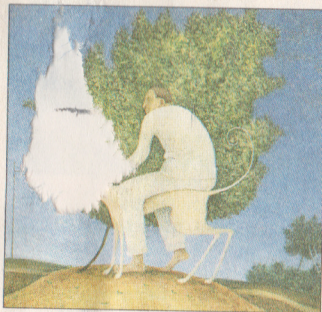
Alasdair Wallace

at Rebecca Hossack

In this column The Week gives its own review of an exhibition in a private gallery.

Alasdair Wallace's paintings draw in the viewer, seducing easily with their colour and light, but above all with their imagery. Wallace, a talented young Scot whose skill belies his lack of years, has a rare gift for the simple. His range of subjects is limited: dogs, men and landscapes. But, whatever his theme, the content is always imbued with an unexpected elegance. The running

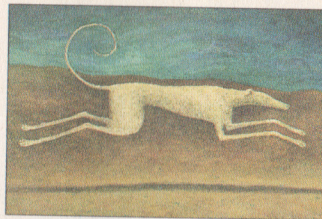
greyhound of "Dog and Shadow", its attenuated elegance set against a restless sky, becomes almost a neolithic chalk figure. The be-suited, balding man, crouching on all fours, takes on the character of a pig - the "Swine" of the title. Naive in style, almost comic, but



Pyjamas £950

deliberately stylised to suggest the primitive, the artist's creatures possess a talismanic quality.

Wallace uses acrylic paints in a gentle palette to create resonant, multi-layered images that are essentially Romantic icons, contemplative and at times even anthropomorphic. He places his



Dog & Shadow £1,100

creatures in implicitly classical landscapes, suggestive of the Italian Campagna. But if his shrubbery seems to be borrowed from Botticelli, the overwhelming atmosphere of these masterful, elegaic paintings is that of Poussin. Ultimately, the figurative elements of Wallace's works are incidental - mere vehicles

Worlds in a Box

A mixed show at the Whitechapel gallery, *Worlds in a Box* is a selection of art work contained within boxes. The artists range from Marcel Duchamp (who according to William Feaver in the Observer, "makes every other box artist look like a Blue Peter competitor") through to Joseph Beuys and Avis Newman. Critics judge the show on its parts rather than as a whole. John McEwen writes, "The debt that box art owes to the Victorians is exemplified by the god of the genre, the American Joseph Cornell."

for emotion. Such a depth of understanding is hard to find and Wallace deserves greater recognition. On the strength of this showing, he will soon find it.

Rebecca Hossack, 35 Windmill Street, W1. 071 436 4899. To 4th March, afterwards by appt. Paintings from £600 to £3,000

THE WEEK