



George III mahogany Secretaire Bookcase.

REMBRANDTS, MANTRAPS AND MEISSEN

All kinds of fascinating antiques and collectables, from 19th century mantraps to Meissen porcelain, will be on show and for sale at The West London Antiques Fair, Kensington Town Hall, W 8, from 15-18 August. Organised by Penman Antiques Fairs, the

fair will feature a carefully selected choice of antiques and fine art from more than 100 leading British dealers.

As with previous West London Fairs, the emphasis will be on flair, presentation and quality. Dealers will be showing English and European furniture from the 16th to the late 19th centuries; tapestries and textiles, not only from Britain, but also the Far East; pottery and porcelain from many of the famous factories, including Chelsea, Derby and Worcester; glass from Roman times up to and including fine Georgian drinking glasses and Victoria decanters; not to mention brass and copperware, rare and unique oils and watercolours from the 17th to early 20th centuries. There will even be clocks, barometers and watches by many of the world's sought after makers.

WHICH WAY NOW?

The National Maritime Museum is marking the bicentenary of the Ordnance Survey in the

Bradley Gallery of the Old Royal Observatory at Greenwich throughout the summer. The exhibition provides an overview of the history of the Ordnance Survey, from its beginnings in 1791 until today. It features a number of historical Ordnance Survey maps, including the very first map, the 1801 chart of Kent engraved by Thomas Foot.

SONGLINES

The latest exhibition in the Barbican Art Centre's Concourse Gallery is the most exciting and comprehensive exhibition of Aboriginal Art yet mounted in Britain. Organised by the Rebecca Hossack Gallery, it is entitled 'Songlines' and aims to develop the increasing awareness of Aboriginal Art and also to encourage a more sensitive appreciation of the rich variety into this broad category of work being created that falls into this broad category. Aboriginal art is the oldest

continuous artistic tradition in the world. It is pertinent that now, after 40,000 years, the Western world has finally come to appreciate the Aborigine's enduring love and respect for the earth and all that comes from it.

SNEAK PREVIEW

London's first pre-season fashion fair takes place this week at The Collection Gallery, 264 Brompton Road, S W 3. There will be a launch preview on Friday 16 August, from 17.00 to 22.00, where guests will have the chance to meet Britain's top designers, including John Galiano, Antony Price, Workers for Freedom and Elizabeth Stuart Smith. As well as viewing their latest designs, visitors will also be able to take advantage of discounts on their current collections. Trevor Sorbie's artistic team will be on hand to advise on the latest hairstyles for the season. Tickets for the evening cost £10. Sneak Preview will also be open on Saturday 17 August from 10.00-20.00 and from 10.00-18.00 on Sunday 18 August (tickets available at the door.) Tickets for the preview are available in advance on 071 375 1295.

THE COLOUR OF SCIENCE

This Saturday, 10 August, The Science Museum, Exhibition Road, SW7, is inviting children of all ages to join their Colour Trail. In keeping with the Museum's approach, this will be a truly hands-on experience, designed to explain through play, the importance of colour.

The Colour Trail will feature many interactive displays and

demonstrations throughout the Museum, including a wax crayon making demonstration by Crayola, paper-making and printing demonstrations and workshops, optical illusion demonstrations, a colour workshop examining different colouring techniques, all brought to life by the Museum's expert staff, demonstrators and actors. In addition, there will be a workshop where children can learn how to detect what colours appear in their favourite sweets. Open from 10.00-18.00.

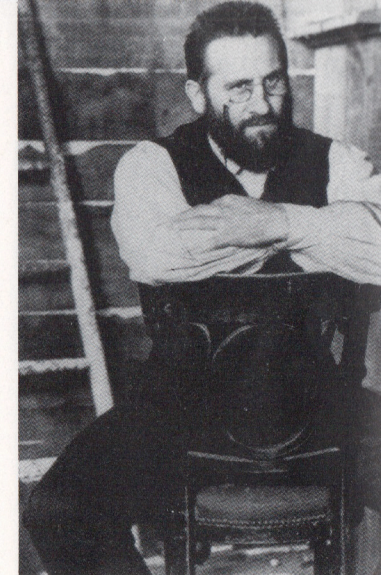
MIDAS TOUCH

This Monday 12 and Tuesday 13 August, from 11.00-12.30, children will be able to join a tour at the Tate Gallery, with the Gallery Guides, to discover ways in which artists have made use of silver and gold in their work. They will then be invited to watch and participate with performance artists Shirley Cameron and Evelyn Silver as they transform into live works of art.

GERARD THE GAUL

A film tribute to Gerard Depardieu featuring all the major movies and some rarities from the French superstar's prolific career, begins in the Barbican Centre's Cinema 1 this Friday 9 August and continues until Thursday 29 August.

This major retrospective opens with a revival of Marco Ferreri's 1975 *The Last Woman*, and contains twenty-five movies in all. These range from one of Depardieu's earliest screen performances - Nathalie Granger (1971) - to his most recent successes in *Cyrano de Bergerac* and *Green Card*.



Gerard Depardieu is the subject of a major retrospective at the Barbican this week.

MARBLE HILL RIVERSIDE CONCERTS



SUNDAY 11TH AUGUST AT 7.00pm

Madam Butterfly A Concert Performance

The English Opera
Conductor: Michael Lloyd

Benjamin Pinkerton - Edmund Barham
Suzuki - Anne-Marie Owens
Sharpless - Norman Bailey
Cio-Cio-San Madam Butterfly - Janice Cairns

Goro - John Harris
Yamadori - Christopher Booth Jones
Bonze - Mark Richardson
Kate Pinkerton - Shelagh Squires

Prices:
In advance £15 (chairs), £10 (grass);
on the night £17.50 (chairs), £12.00 (grass)

24 Hour Credit Card Hotline:
071-379 4444 (no booking fee)

KENWOOD LAKESIDE CONCERTS

SATURDAY 24TH AUGUST AT 7.30 PM

The English Sinfonia

Conductor: Sir Charles Groves
Piano: Paul Berkowitz

Mozart *Overture: The Magic Flute*
Beethoven *Piano Concerto No 5 in E flat major, The Emperor, Op 73*
Schubert *Symphony No 9 in C major, The Great*

Tickets: £7 (chairs), £4.50 (grass)
Box office: 071-379 4444 (24hr Credit Card Hotline)
Also available on the night.

Kenwood, Hampstead Heath, Hampstead Lane, NW3



LONDON ARENA
DOCKLANDS
AUGUST 13-17

Cask ales, bottle conditioned beers, foreign
beers and lagers, cider and-perry, pub
games, live entertainment and family room.
All the fun of the fest.

Tuesday to Friday evenings:
5pm-10.30pm; £2.50
Wednesday to Friday lunchtime:
11.30am-3pm; £1
Saturday 11am-10.30pm; £2.50
No entry after 10pm
BE THERE!