

stella

**GEORGIA O'KEEFFE
IN CLOSE-UP**

The real woman behind
the (very beautiful)
public face

**CANCER:
THE CARTOON**

One twentysomething's
heartwarminglly wry
take on its toll

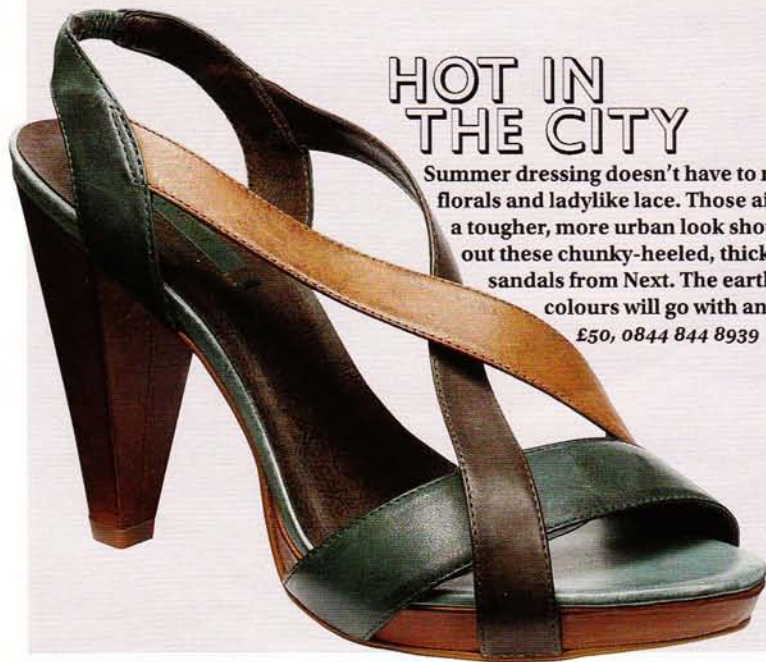
**SUMMER
ON A PLATE**

Diana Henry's
sensational
salmon recipes

plus
THE DINKIEST
LITTLE BLACK DRESSES
OUT THERE

**DOLL OF THE VALLEYS
THE CUTE,
ASTUTE
CHARLOTTE CHURCH**





HOT IN THE CITY

Summer dressing doesn't have to mean floaty florals and ladylike lace. Those aiming for a tougher, more urban look should check out these chunky-heeled, thick-strapped sandals from Next. The earthy safari colours will go with anything, too. £50, 0844 844 8939



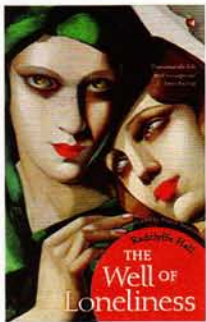
CHEAP TRICK

This striped cotton beach bag from Joules has a fresh, timeless look that will work for any seaside sojourn. £25, 0845 606 6871

STELLA LOVES...

Compiled by Nisha Lilia Diu

THIS WEEK'S MUST DO, SEE, BUY 29 June 2008



When Radclyffe Hall published her lesbian novel **THE WELL OF LONELINESS** in 1928, it was charged with obscenity despite its only sex scene consisting of the words 'and that night, they were not divided'. Unsurprisingly, sales soared. Virago's 80th-anniversary edition of the book is out on Thursday. £9.99

IF YOU'VE SEEN *The Edge of Love* and are now pining for Dylan Thomas country, head for Ty Mawr in south Wales. Keira Knightley and Sienna Miller stayed here during filming, and the locally sourced food, stunning setting and glorious quiet make it a truly special place. 01570 470033; tymawrmansion.co.uk



We're not SURE they're really meant for children - those removable eyes and lips look like choking hazards - but that hasn't put us off **ANDREW MOCKETT's** brightly painted wooden toys. This space-rocket jigsaw, complete with alien inhabitants, is one of only five handmade, hand-painted pieces.

£450, 01273 601262

