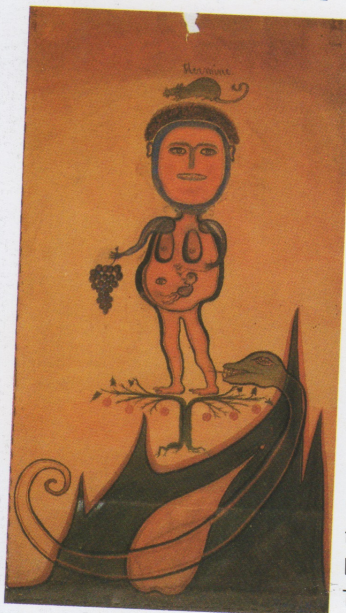


RAW NEWS

AUSTRIA: ANTON MÜLLER IN LAST FOREIGN EXHIBITION



Heinrich Anton Müller at BAWAG, Vienna

The BAWAG Foundation in Vienna is showing the classic works of Heinrich Anton Müller (1869-1930) from June 15 to Sep 3. Besides Adolf Wölfli, Müller is regarded as the most important Swiss example of Art Brut. He was hospitalised in 1906 and after spending a few years constructing a series of perpetual motion machines, he began to draw. It has been announced that this will be the last exhibition of Müller's work outside Switzerland as conservation concerns mean that his drawings will no longer be permitted to travel. Tuchlauben 7a, 1010 Vienna. Tel: (+43) 153 453 2296

BRITAIN: BEN WILSON AT WORK ON NEW CREATION



Ben Wilson, genius of wood, has been at work over the past few months in the grounds of Woodhouse College, Woodhouse Road, Finchley, North London. Centered around an abandoned building, the creation includes full size painted figures and a complex arbor. The future of this newly built environment is in some doubt, as college authorities are considering constructing a new car park on the site.

CONFERENCE AT EDINBURGH

A Conference on Outsider Art presented by the Art Extraordinary Trust takes place in Edinburgh from November 23-26. Speakers include John MacGregor, Anthony Storr and Roger Cardinal. Details from Leigh Jane Phillips, Co-ordinator, Edinburgh College of Art, Research / Exhibitions Office, Lauriston Place, Edinburgh, EH3 9DF. 0131 221 6215.

RV/31•6

BELGIUM



Inès Andouche at Art en Marge, Brussels

The Art en Marge organisation are presenting an exhibition of drawings by Italian artist Umberto Bergamaschi, delicate paintings by French artist Monique le Chapelain and powerful pastel works by Inès Andouche. Rue des Alexiens 59, 100 Brussels. Tel: 02 511 0411

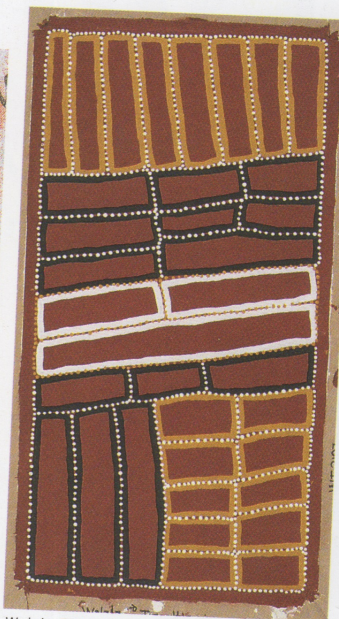
BRITAIN



Albert Loudon at the Boundary Gallery

Forty new works on paper and two new large-scale paintings by Albert Loudon are on display, June 23-July 29, at the Boundary Gallery, 98 Boundary Road, London, NW8. 020 7624 1126.

Australian artist Dorothy Napangardi's densely patterned paintings and Walala Tjaplatjarri's bold, geometric works show from Aug 3-Sept 3. Long Tom



Walala Tjaplatjarri at Rebecca Hossack

Tjapanangka and other artists of Haast's Bluff desert community exhibit their modern Aboriginal Art, Sept 7-Oct 7 at Rebecca Hossack Gallery, 35 Windmill Street, London W1P 1HH. Tel: 020 7436 4899.



Michele Clare (detail) at Bantock House

Michele Clare's beautiful and mysterious drawings hang in 'Black Country Gothic', July 8-9 at The Stable Block, Bantock House and Park, Bantock Park, Finchfield Road, Wolverhampton, WV3. 01902 552195. 'Black Country Gothic II', August 4-11, brings her black and white fantasies to the Rogues' Gallery, 2 Broad Street, Hay-on-Wye, HR3 5DB. 01497 821677.